



# How to Build a Walk-In Cooler for Your Small Farm



# Introduction

For small farms, cold storage can mean the difference between profitability and not making ends meet. Produce starts to deteriorate as soon as it's picked, and, especially in warm temperatures, that deterioration can happen very quickly. This can lead to costly postharvest loss.

Cold storage enables you to harvest your crops at the most advantageous time and keep them fresh until you're ready to take them to market, [package them](#) for CSA pickup, or distribute them through another channel.

This guide teaches you everything you need to know to build your own walk-in cooler from scratch using a °CoolBot temperature controller and an air conditioner.

Here's what you'll learn:

- What it costs to build your own °CoolBot-powered walk-in cooler
- Where on your property to put your cooler
- How to insulate a room
- How to seal your cooler
- How to hook up electricity and lighting
- How to select the right air conditioner
- How to install your air conditioner
- How to install your °CoolBot
- Ideal temperatures for storing common fruits and vegetables

*This DIY guide is for both the °CoolBot and °CoolBot Pro. For simplicity, we will just reference the °CoolBot.*



# How Much You'll Save with a °CoolBot-Powered Walk-In Cooler

The °CoolBot makes cold storage accessible for farms of all sizes. Depending on the size, a traditional walk-in cooler can cost between \$6,000 and \$20,000. In addition to this upfront cost, you also need to consider the operating costs (energy) and service, which usually requires a specially trained technician.

In contrast, the °CoolBot provides a solution that's not only more affordable upfront, but also saves you money over the long run.

Our customers spend, on average, about **\$4,000** in total building an 8X8 walk-in cooler.

That **\$4,000** includes all equipment and insulation. For additional savings, many businesses repurpose lumber and insulation, which allows them to build their cooler for much less.

And the savings don't stop there. Since it uses roughly 40% less energy than a traditional cooler, the °CoolBot continues to save you money every month. And you'll never need to call a maintenance technician. Our customer support team is available to help you by phone and email to solve any problems that might arise.



The chart below shows the economic advantages of a °CoolBot over a traditional system.

	°CoolBot + 24K BTU A/C	Traditional Walk-in Cooler Refrigeration System	Savings
<b>Refrigeration Unit Upfront Cost <sup>1</sup></b>	°CoolBot Pro \$419  24K BTU window A/C \$720  <b>Total: \$1,139</b>	Top-mount self-contained refrigeration unit  <b>\$5,253</b>	<b>\$4,114 (78%)</b>
<b>Installation <sup>2</sup></b>	Designed for easy installation by end users	Requires expensive professional installation <b>\$3,900</b>	<b>\$3,900</b>
<b>Operating Costs <sup>3</sup></b>	Uses up to 40% less energy compared to a traditional walk-in cooler refrigeration system		<b>Potentially \$100s per year</b>
<b>Service</b>	Customer support team available by phone and mail	At least \$150 to have a refrigeration technician take a look; potentially more expensive to resolve any issues	<b>Potentially \$100s per year</b>
<b>Reviews</b>	<b>5-STAR Reviews on Amazon and Hundreds of testimonials.</b>		
<b>Total Savings</b>	<b>The °CoolBot Pro saves \$1,000's of dollars to over 100,000 customers in 70 countries.</b>		

Footnotes:

1. 24K BTU LG air conditioner pricing per lowes.com including delivery to ZIP 48843 [as of 1/27/2023]. Top mount conventional self-contained refrigeration unit Heatcraft PT0078MBNAMSA PRO3 per <https://rudysrefrigeration.com> delivered to 48843 [as of 1/27/2023]
2. Quote in Denver, Colorado for a self-contained walk-in cooler top mounted refrigeration system installation [quote received 1/17/2018]
3. 41.7% energy savings when comparing a °CoolBot-driven system versus a conventional refrigeration system for a simulated cooler. The simulated cooler was 250 square feet, located in Albany, and set at 41 degrees Fahrenheit. See page 13 of the NYSERDA report: [Evaluation of the °CoolBot Low-Cost Walk-In Cooler Concept](#)

You need three things to build your walk-in cooler:

- A well-insulated room
- An air conditioner
- A °CoolBot

The rest of this guide provides details about these three key components.



Learn how to fill your cooler from our friend [Curtis Stone](#)

# Where Should You Put Your Walk-In Cooler?

If you're building a standing cooler, as opposed to a mobile one, choosing the location is one of the most important decisions you will make. This is especially true if you live in a hot climate.

Just like you're more comfortable in the shade during the middle of summer, your cooler is much happier out of direct sunlight. This is critical for energy savings. Coolers in direct sunlight require approximately 70% more electricity than coolers in the shade.

For the most efficient performance, place your cooler in a protected area:

- Inside an existing building
- Under a tree
- On the north side of a barn
- Under an overhang on an existing structure

If you build an overhang for your cooler, be sure to build an openly vented roof that keeps the sun off the insulated ceiling of the cooler.

Flat roofs on a small cooler may still be structurally sound in wind, rain, and snow loads, but they don't protect from sun exposure. Building a standard peaked roof with ventilation over the insulated cooler ceiling will shade the cooler and provide passive ventilation that will keep air circulating over your cooler and help you save money on cooling costs.

Using the °CoolBot Pro on your outdoor cooler? Make sure it is in a weatherproof non-metallic box.

**\*\*Note:** Heat rises, which is why in a house we put twice as much insulation on the roof as the walls. Cold air sinks, so if you keep your cooler roof out of direct sunlight, you can put the same insulation in the roof as you did in the walls. This will save you money in both upfront construction and long-term operating costs.

# Insulation

Insulation helps you keep both your cooler temperature and your electricity bill down. Insulation is measured by its **R-value**, which tells you the capacity of the insulation to resist heat. The higher the value, the more effective the insulation.

The industry standard for walk-in coolers is R25. Going up to R30 will save you even more money, especially if you are keeping your cooler at 40°F or below.

## Recommended insulation: Rigid foam

There are several types of insulation you can use in your walk-in cooler. We recommend using rigid foam whenever possible -- polyisocyanurate on the walls and ceiling and extruded polystyrene on the floor.

<b>Polyisocyanurate</b>  Best choice for walls and ceiling	<ul style="list-style-type: none"><li>● Grey or yellow</li><li>● R-value of ~6.8 per inch (can vary among brands) After 5-10 years: R-value of 5.5 per inch (where it stays)</li><li>● Comes in 4' x 8' sheets</li><li>● Available at Lowe's and Home Depot</li></ul>
**Use at least 4 inches. If it has foil backing, be sure it faces the outside. This product can be irritating to skin, so be sure to wear long sleeves when working with it.**	
<b>Extruded Polystyrene (XPS)</b>  Best choice for floor	<ul style="list-style-type: none"><li>● Pink or blue</li><li>● After 5-10 years: R-value of ~6 per inch (where it stays)</li><li>● Comes in 4' x 8' sheets</li></ul> Available at Lowe's and Home Depot
**Use at least 4 inches in the walls.**	

This guide tells you how to work with our recommended rigid foam insulation. [Visit our website](#) for information about using alternative insulation solutions, including spray-in-place foam, ROXUL mineral wool, and cellulose.

### **WARNING: Do not use fiberglass batt insulation!**

Even with a vapor barrier, moisture seeps into the fiberglass insulation. This will create a moldy nightmare and also allow cold air to leak out, resulting in higher electricity bills.

# How to insulate a room

This section provides tips for insulating and sealing your room.

## Select insulation of at least R25

When purchasing insulation, remember that the higher your R-value, the lower your electricity bill. You only purchase insulation once, while electricity is an ongoing expense. Spending a little more money upfront will save you a lot more down the road.

Also keep in mind that the R-value of insulation is additive. So, depending on the insulation you use, you may need multiple layers. For example, you could use two layers of R10 plus one layer of R5 to achieve R25.

## Make sure your cooler is airtight

Before you insulate, you'll want to make sure your cooler is airtight. This will allow it to cool down faster and to lower temperatures, while also keeping your electricity bill down by preventing the cold air from escaping.

Use several cans of spray foam and caulk to seal the following:

- Cracks
- Seams between insulation sheets
- Under the door (use a door sweep as well for extra seal)
- Every corner

### Sealing around the air conditioner

This is a common place for hot air to sneak in. For this area, we recommend using pipe insulation instead of spray foam. This way, if you ever need to pull the A/C unit out, you don't have to carve away the spray foam.

Pipe insulation is available at the hardware store. It's soft and pliable, but still has a "closed cell" structure, so water can't get in and air can't pass through. Look for pipe insulation in 6' strips that you can cut to the size you need before stuffing it into the gap between the wall and the air conditioner.

## Attach insulation over the studs, not in between

Tack the rigid foam up on the **outside** of the studs, not in between them. Cutting up your insulation to go in between studs will not only leave gaps and holes, but no matter how careful you are, polyisocyanurate and polyurethane will shrink a bit over time, exposing your cooler even more.



## Overlap the seams on multiple layers of insulation

If you're using multiple layers of insulation (e.g., 2' x 2' layers) to achieve your target R-value, stagger the seam locations and overlap the insulation. This will create a more effective barrier compared with having all the seams lined up on top of one another.

## Prepare and insulate the floor

Since cold air falls, insulating the floor of your cooler traps the cold air. This keeps your electricity bill lower and reduces the load on your A/C.

### For perched floors:

Coolers built on a deck need at least as much (preferably more) insulation in the floor as in the walls. If you build on a deck instead of a slab, you need to insulate the floor to at least R25 (and R30 would be even better).

If you have an untreated wood floor under your cooler, you will need to put in a vapor barrier. Here's a method we've found successful:

1. Put three layers of carpenter plastic between the Styrofoam and the top layer of plywood. As an alternative, you can use a single pond liner.
2. Stretch the plastic out into a "bathtub floor" that goes up the walls a couple inches.
3. Screw the roof edge about 3" above the floor all the way around the wall like a metal baseboard, and gather the plastic under it.
4. Caulk the entire top of the roof edge so the water dripping off of the walls won't slip between the plastic and the wall, pooling up under the floor.

### For concrete slab and dirt floors:

Whether or not it makes sense to insulate a concrete or dirt floor depends on your targeted cooler temperature. On average, adding a floor will increase the efficiency of your cooler by about 15%.

Above 45°F / 7.2°C	Insulating the floor isn't worth the investment.
Down to 38°F / 3.3°C	If you live in a hotter region, you might want to insulate the floor, but typically you can still reach 38°F / 3.3°C without it.
Below 38°F / 3.3°C	Floor insulation is required. Even just 2" of insulation makes a big difference.

If the concrete pad extends beyond the cooler, the pad can absorb radiant heat. In this case, you'll need to insulate the floor.

## How to insulate the floor

Whether you're building up on an existing trailer deck, above a basement, or on a slab, you don't need to frame out a floor. Simply follow this two-step process:

1. Place rigid foam directly on the floor.
2. Lay  $\frac{3}{4}$ " plywood painted with porch paint (or any exterior paint) directly on top of the rigid foam.

The plywood spreads the load out enough over the rigid foam. Even after 10 years, your insulation will still be holding strong.

In fact, if you were to stud out your floor, you would risk decreasing the effectiveness of the insulation, because the studs can create thermal bridges where the cool air flows out through the less-insulated studs, between small gaps in your insulation.

## Do you need drainage?

For a cooler that will just be used for produce, you shouldn't need to install a drain. There likely won't be enough water accumulating, and putting one in would just compromise the integrity of the cooler. The only thing the drain will really let out is the cold air!

Instead, we recommend you tilt the floor toward the door so that any water that gathers due to condensation or dripping veggies can drain out.

It's also important that you site your structure so the water has someplace to go once it leaves the door. If you're building on a trailer or a deck-type floor, this is easy to do. If you're pouring a new slab, build it a little bit above grade and put your formwork a barely noticeable "off-level" toward the door.

## Sheathing

Finally, you may want to install sheathing to protect the insulation. The safest option is to put both interior and exterior sheathing on your cooler. However, if you're careful (and don't have employees carrying boxes in and out and banging them on the walls), you should be fine with just the exposed solid Styrofoam insulation.

## Inner sheathing

An easy and inexpensive option for inner sheathing is oriented strand board (OSB), which is similar to particle board. If you use this material (or untreated plywood), be sure to seal it before installation.

Another option for inner sheathing is fiberglass reinforced plastic (FRP), which is durable, sanitary, and easy to clean.

## Outer sheathing

If you built your cooler inside an existing structure, you don't need to sheath it. If it's outside, the sheathing will help protect the insulation from the sun. An affordable way to

do this is by splitting sheets of CDX plywood into 1'x8'-foot strips to make your own overlap siding.



# How to Seal Your Cooler

Proper sealing is essential for your cooler to function efficiently. This includes sealing joints between the walls, floor, and ceiling. You should also regularly check the gaskets on your door.

For sealing insulation, we recommend using spray foam, like [Great Stuff](#). You can also use weather stripping or a rubber gasket if your door doesn't have a nice tight seal. Other options include caulking, pool toy floaties, and the same soft foam pipe insulation you used to insulate between the air conditioner cabinet and the walls.

The sealing step must be completed before you turn on your cooler for the first time.

**\*\*Note:** It's important to take your time sealing the room. Even the smallest hole can have a large impact on your cooler's energy efficiency.



## Your cooler door

The door is another essential tool for keeping the cold air in. We recommend you use a pre-hung insulated exterior door without windows. This type of door seals up tight.



Here are a few tips for getting the most out of your door:

- Make sure your door opens to the outside of the cooler. As you build your cooler, ensure that it's slightly above the surrounding ground level so the door can swing freely.
- Glue another layer of 2" rigid foam to the inside of the door, as most doors are only about R18.
- If you plan on hosing down your cooler, remove the bottom metal piece of the pre-hung door so it doesn't create a dam for the water inside your cooler. You'll also have to cut the sides of the door down so the bottom stays flush against the floor.
- You can add a door sweep to help seal out any drafts that may be sneaking in at the bottom of the door. This [M-D Building Products door bottom with drip cap](#) is inexpensive and effective.
- To limit cold air loss when the door opens, use [plastic curtains](#) and automatic door closers.



# Electricity & Lighting

Because a cooler can be a moist environment, we recommend using outdoor rated light sockets and outlets.

This is less about the fixture than about the perforations that wires make when they come into the cooler. A vacuum effect can be caused by the warm outside air being sucked in through the back of the outlet box by the cold cooler air. This can result in moisture gathering, which could cause the circuit to trip.

Here's the solution:

1. Take the cover off the outlet.
2. Find where the wire enters the back of the outlet box.
3. If there are any gaps where the wires enter the box, seal them so no air can move through using silicone caulk, clay, or feldspar.
4. Replace the cover.



# How to Select the Right Air Conditioner

**\*\*Important: A/Cs must have digital controls to work with the °CoolBot.\*\***

The °CoolBot works with most standard air conditioners. The right one for you depends on three elements:

- A/C size in BTUs
- Unit type – window unit or mini split
- A/C Brand

This section of the guide will walk you through these three elements.

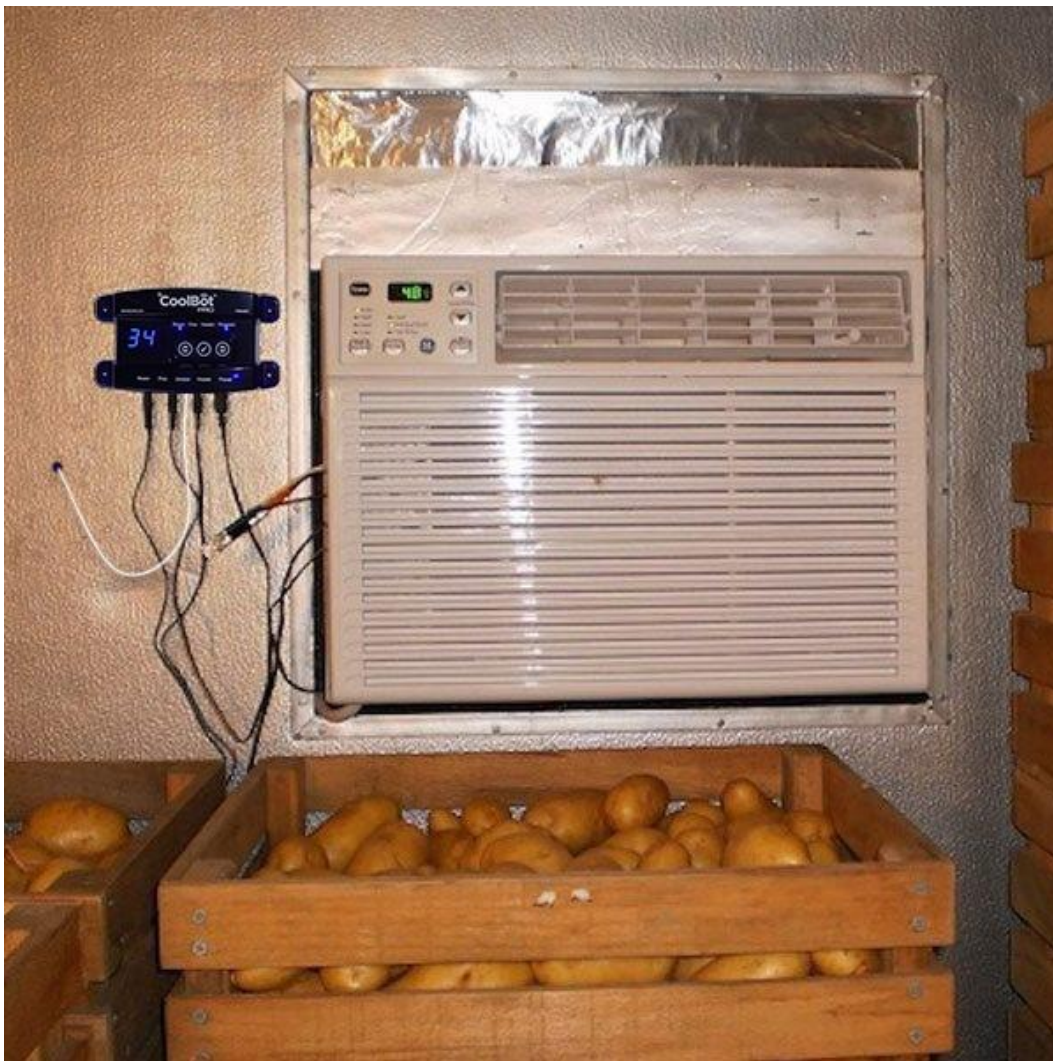
## A/C sizing

Air conditioner size is measured in BTUs, which is a unit of heat. The chart below shows our recommendations for A/C size based on cooler size, using a desired temperature range for produce of 38°F / 3°C.

**\*\*Note:** These A/C sizing suggestions are based on an airtight cooler with an 8' ceiling, insulated to at least R25 and opened no more than six times per hour.

Cooler Dimensions	A/C Size
4' x 4'	8,000 BTU
6' x 6'	8,000 BTU
6' x 8'	10,000 BTU
8' x 8'	12,000 BTU
8' x 10'	15,000 BTU
8' x 12'	18,000 BTU
10' x 14'	24,500 BTU
Larger coolers may require multiple A/C units and °CoolBots. Please call us for more information: 888-871-5723.	





## **Air Conditioner Unit Types**

**IMPORTANT:** All A/Cs must have **DIGITAL** controls to work with the °CoolBot.

There are several different types of air conditioners. Here's how the different A/Cs work with the °CoolBot.

### **Window A/C - Highly recommended**

The window unit is our preferred type of A/C because it's durable and efficient. Whether you're building a standing cooler on your property or a mobile cooler to take to market, a window unit will deliver the best performance.

Readily available in the United States, window units are also affordable and will work even if you're installing the A/C in an 11" thick wall.

### **Mini-split A/C - Recommended**

If you lack the space for a window unit to be installed properly, or live in a country where window A/Cs are hard to find or expensive, a mini-split will work in a pinch. In



the United States, mini-splits can cost twice as much as a window unit, but they're also more efficient and can confer higher energy savings.

### **Through-the-wall A/C - Recommended with reservations**

Through-the-wall units tend to be twice the price of window A/Cs. They also seem to have (slightly) more electrical problems -- not serious or unworkable problems, just unnecessary annoyances. If you already have a through-wall unit, don't hesitate to use it. But if you're purchasing a new A/C, you'd be better off with a window unit or a mini-split.

### **Portable A/C - Not recommended**

Portable A/C units bring too much warm air to the cooler, and they can only get down to 50°F / 10°C. They're also more expensive and consume more electricity than our recommended units.

## **Air Conditioner Brands**

We, and our customers, have tested the °CoolBot with many different brands of air conditioners. And list keeps expanding. Below is a link to our most current assessments of compatible brands of A/Cs:

### **[A/C Brand Compatibility List](#)**

### **Our most recommended brand is LG**

LG is our favorite brand because it's easy to install and provides consistent performance. Thousands of our customers use LG air conditioners. Some of them are still running strong from 2006!

You can buy our preferred LG A/C units via our website at the link below:

### **[LG Air Conditioners](#)**

**Most compatible brands of window Air Conditioners can be purchased online at:**

**[Build.com](#), [HomeDepot.com](#), [Lowes.com](#), [Bestbuy.com](#), [Walmart.com](#), [Amazon.com](#)**

# How to Install Your Air Conditioner

Follow these three basic steps to install your air conditioner:

1. Cut an appropriate-sized hole in the wall of your walk-in cooler.
2. Put the A/C unit into the hole.
3. Use some type of insulation so that you can easily remove the A/C instead of having to carve it out in case you switch units in the future. (See the Insulation section of this guide for more information.)

## A/C and °CoolBot placement

Here are a few tips for where to place your A/C and °CoolBot in your cooler.

### Mount it at eye level

The A/C will perform at its best when it's installed so that the bottom of the unit is at eye level. Cold air sinks, so the higher the A/C the better. This also makes maintenance a lot easier.

### Make sure the A/C blows down the length of the cooler

If your space is rectangular, then the A/C should be mounted on one of the shorter walls so that it blows down the length of the room. For example, in a 5' x 10' room, mount the A/C on one of the 5' walls.

### Mount the °CoolBot and the A/C side by side

The °CoolBot should be mounted inside the cooler next to the A/C unit. For troubleshooting purposes, mount them right next to each other.

### Install the A/C at a slight tilt

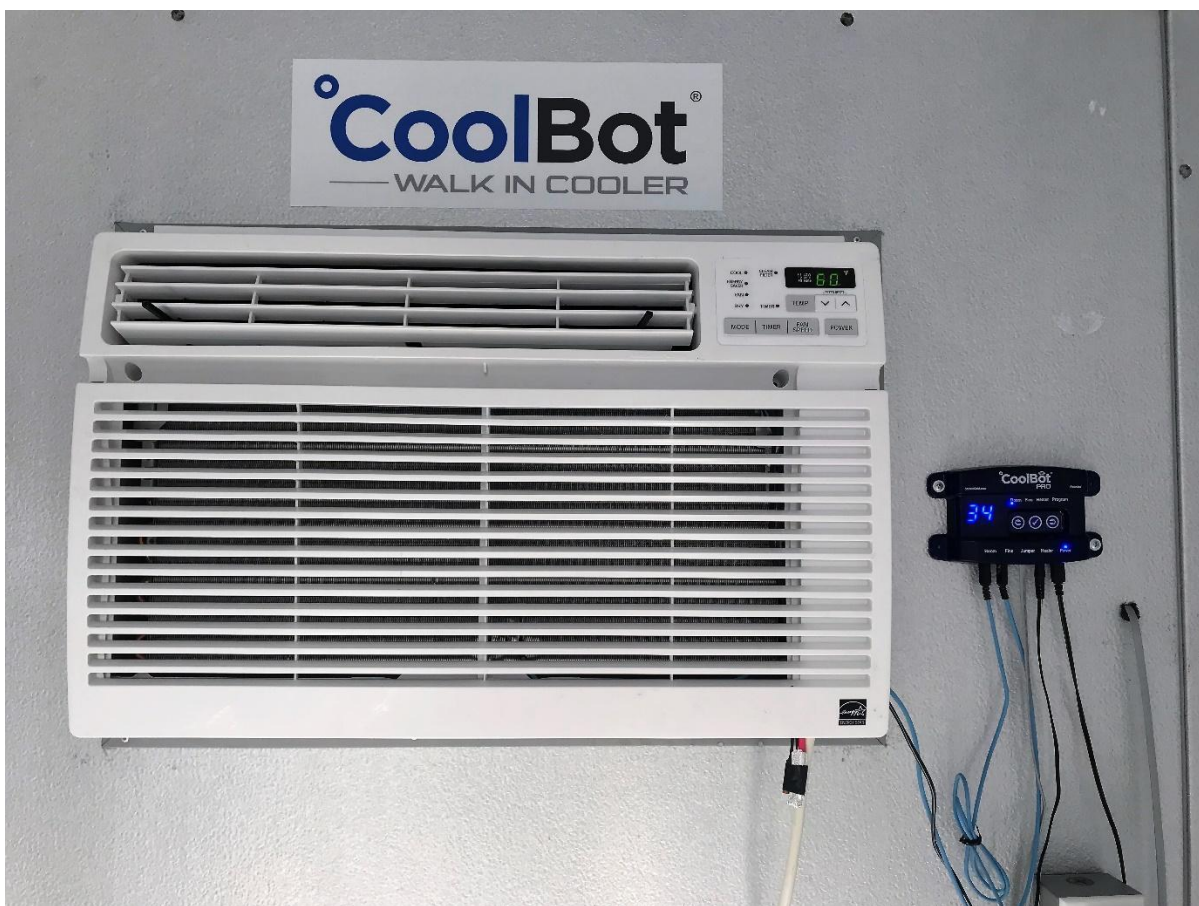
Install your A/C so that the back of the unit (outside the cooler) is about an inch lower than the front of the unit (inside the cooler). This is so the condensation that the A/C pulls out of the air can drip out the back rather than freezing inside the unit.

Most air conditioners will keep some water at the back of the pan to help cool the compressor and extend its life. The tilt is important so that the water doesn't get too far forward, where it can freeze.

**\*\*Note:** Air conditioners must be level left-to-right because they're designed with a trough for water inside.

### Allow your A/C to breathe

Air conditioners need at least 2' of clearance overhead on the back side to vent properly. If there's not enough room, your unit will overheat and fail prematurely. Check the specifications of your particular A/C to determine the exact setback required for your model.



# How to Install Your °CoolBot

[Please visit our website](#) for step by step videos and guides on installing your °CoolBot or °CoolBot Pro.

\*If your A/C has a secondary sensor or is a mini-split A/C, [see our website](#) for great videos and guides on install and setup instructions.





# Ideal Temperatures for Storing Common Fruits & Vegetables

## Storage Conditions for Select Vegetables and Fruits from ATTRA

Product	Temperature	Storage Life In Days
Apples	30–40°F / 1–4°C	90–240
Asparagus	32–35°F / 0–2°C	14–21
Beans, fresh	40–45°F / 4–7°C	10–14
Beets	32°F / 0°C	90–150
Blueberries	31–32°F / -1–0°C	10–18
Broccoli, Cauliflower, Cabbage	32°F / 0°C	10–14
Cantaloupe	36–41°F / 2–5°C	10–14
Carrots, topped	32°F / 0°C	28–180
Cherries, sweet	30–31°F / -1°C	14–21
Corn, sweet	32°F / 0°C	4–6
Cucumbers	50–55°F / 10–13°C	10–14
Eggplant	46–54°F / 8–12°C	10–14
Grapes	32°F / 0°C	56–180
Lettuce	32°F / 0°C	14–21
Okra	45–50°F / 7–10°C	7–14
Onions, bulb	32°F / 0°C	30–180
Onions, green	32°F / 0°C	7–10
Peaches	31–32°F / -1–0°C	14–28
Peas, fresh snap	32°F / 0°C	7–10
Peppers	40–55°F / 4–13°C	12–18
Potatoes	40–50°F / 4–10°C	56–140
Pumpkins	50–60°F / 10–15°C	84–160
Raspberries	32°F / 0°C	2–3
Spinach	32°F / 0°C	10–14
Squash, summer	41–50°F / 5–10°C	7–14

Squash, winter	50-55°F / 10-13°C	84-150
Strawberries	32°F / 0°C	5-10
Sweet potatoes	55-60°F / 13-15°C	120-210
Tomatoes	62-68°F / 16-20°C	7-28
Turnips, Rutabagas	32°F / 0°C	120-150
Watermelon	50-60°F / 10-15°C	14-21

# Ready to Buy Your CoolBot Pro or CoolBot?



[Shop Now](#)